



International Chinese Statistical Association

泛華統計協會

www.icsa.org

Bulletin

會刊

January 2007

Features:

New Executives and Committees' Members

Meeting Announcements

Applied Statistics Symposium (June 3-6):

Registration on-line via www.icsa.org

Taipei International Statistical Symposium
and ICSA International Conference (June
25-27): Details at www.icsa.org

Table of Contents

ICSA Bulletin, January 2007

| | |
|---|----|
| From the Editor | 2 |
| Editorial Members | 2 |
| Executives and Members of the Committees, ICSA | 3 |
| From the President | 7 |
| From the Past President | 8 |
| From the Executive Director | 9 |
| From the Past Executive Director | 11 |
| Results of 2006 ICSA Election | 12 |
| Report from 2006 Chair, Program Committee, ICSA | 13 |
| Report from ICSA 2006 Banquet | 15 |
| Member News: | |
| Dr. Dennis Lin | 17 |
| Regional Activities | 18 |
| ICSA 2007 Applied Statistics Symposium: | |
| Announcement | 20 |
| Short Courses | 23 |
| Student Awards and Travel Grants | 29 |
| Program Overview | 30 |
| ICSA Financial Report, January – December 2006 | 34 |
| Submission Guidelines for ICSA Bulletin | 36 |

From the Editor-in-Chief Tzu-Cheg Kao, Ph.D.

I would like to thank the Editorial Members for helping me in publishing our Bulletin, the executive members (Jun Shao, Yi Tsong, and Ming-Hui Chen) for continuing support, Ivan Chan (the past Executive Director) and Weiyang Yuan (the past Treasurer) for encouragement and assistance. And, I gave special thanks to Cynthia Liu for having continued to prepare the reports and articles for publication.

Some highlights are: New executives, and members of the committees of ICSA 2007; 2006 ICSA election results; upcoming meetings from the Program Committee; ICSA 2006 banquet during the ASA annual meeting; highlights of the 2007 Applied Statistics Symposium; and information about the 2007 Applied Statistics Symposium. Regarding the submission guideline (detailed in this issue), please note the deadlines are December 15, and June 15 for the upcoming January, and July issues. I urge our members to visit our ICSA website, www.icsa.org so that you will know the most updated information about upcoming meetings, renew membership or apply to be a new member, and network with ICSA members.

In order to better serve our members continuously, we want volunteers to help:

- Organize the topics of general interests of our members
- Interview with distinguished statisticians in academia, industry and government
- Serve new, and junior statisticians
- Share professional accomplishments, member news, and success stories
- List upcoming meeting events
- Solicit advertisements
- Review articles

If you are interested in volunteering, or if you have any suggestions at all, please contact me as soon as possible.

Best Wishes,

Tzu-Cheg Kao
Editor-in Chief, International Chinese Statistical Association (ICSA) Bulletin
Tel: 301-295-9756, Fax: 301-295-1854, E-mail: tkao@usuhs.edu

Editorial Members of ICSA Bulletin

Tzu-Cheg Kao (Editor-in-Chief), Jun Shao, Ming-Hui Chen, Yi Tsong, Ivan Chan, Jiahua Chen, Yusong Chen, Weiyang Yuan, Cynthia Liu (manuscript format organizer), Jing Xu (Advertising Manager), Kan Wu (cover designer)

Advisors of ICSA Bulletin: Kao-Tai Tsai, Sue-Jane Wang

EXECUTIVES AND MEMBERS OF THE COMMITTEES OF ICSA 2007

EXECUTIVES

President: Jun Shao (2007)
Past President: Yi Tsong (2007)
President-elect: Jane-Ling Wang (2007)
ICSA Main Account Treasurer: Yusong Chen (2007-09)
ICSA Applied Symposium General Account Treasurer: Lynn Kuo (2007-09)
Executive Director: Ming-Hui Chen (2007-09)

BOARD of DIRECTORS

Greg Wei (2007), Biometrics Section Representative
Chin-Fu Hsiao (2005-2007), Jian Huang (2005-2007), Jack, J. Lee (2005-2007), Guanghan Liu (2005-2007), Naisyin Wang (2005-2007), Lixing Zhu (2005-2007), Josh (Yonghua) Chen (2006-2008), Milton Chung-Lien Fan (2006-2008), W.K. Li (2006-2008), Bing Li (2006-2008), Suojin Wang (2006-2008), Mingxiu Hu (2006-2008), Waisum Chan (2007-2009), Runze Li (2007-2009), Aiyi Liu (2007-2009), Mey Wang (2007-2009), Yuedong Wang (2007-2009), Yaning Yang (2007-2009)

STANDING COMMITTEES

Program Committee: (Normally 3 years, At most 6 years)
Naitee Ting (Chair 2006-2007),
Xiaoming Sheng (2007), Shuyen Ho (2007), Wenlian Li (2005-2007), Greg Wei (2005-2007), C.S. Cheng (2005-2007)

Term of reference:

- (1) Recommend conference and symposium sites, including candidates for their chairs.
- (2) Recommend general policy for all meetings, subject to approval by the Board of Directors.

2007 Objectives:

- (1) Co-sponsor IMST2007: University of Science and Technology of China in Shanghai during May 20-23, 2007.
- (2) Coordinate 2007 ICSA Applied Symposium: June 3-6, 2007, Raleigh, North Carolina.
- (3) Coordinate the 2007 Taipei International Statistical Symposium and 7th ICSA International Conference from 25 to 27 June 2007.
- (4) Coordinate 2008 ICSA Applied Symposium: New Jersey (Jun Zhao).
- (5) Confirm 2009 ICSA Applied Symposium: San Francisco (Ying Lu).
- (6) Select sites for the 8th ICSA International Conference and 2010 ICSA Applied Symposium.

Finance Committee:

Yusong Chen (Chair 2007-09), yusong.chen@astrazeneca.com
Members: Lynn Kuo (2007-09), lynn@stat.uconn.edu
Weiyang Yuan (2007-09), WYuan@prdus.jnj.com

Treasurer of ICSA general account: Yusong Chen (2007-09)
Treasurer of ICSA Applied Statistics Symposium general account: Lynn Kuo (2007-09)
Treasurer of ICSA J. P. Hsu Memorial Scholarship Fund: Weiyang Yuan (2007-09)

Term of reference:

- (1) Manage three ICSA bank accounts.
- (2) Oversee the budget and to recommend long-term financial planning and invest the Association's assets, subject to approval by the Board of Directors.

2007 Objectives:

- (1) Produce account summary twice a year.
- (2) Execute T&E approved by the President or Board.

Nomination and Election Committee:

Feifang Hu (Chair, 2007) (fh6e@virginia.edu)
Ling Chen (2007, ling.chen@fda.hhs.gov), Siuhung Cheung (2007, shcheung@sta.cuhk.edu.hk),
Xuming He (2007, x-he@uiuc.edu), ChinFu Hsiao (2006-2008, chinfu@nhri.org.tw),
Aiyi Liu (2007, liua@mail.nih.gov)

Term of reference:

Nominate the candidates for President-elect and members of the Board of Directors.

2007 Objective:

Produce ballot before ICSA Symposium in June and complete election prior to JSM in August.

Publication Committee:

Kao-Tai Tsai (Chair, 2006-07),
Tzu-Cheng Kao (Bulletin), Hwai-Chung Ho (Statistica Sinica),
Jang-Ling Wang (Statistica Sinica), Ivan Chan (ex-officio),
Zehua Chen (2005-2007: stachenz@nus.edu.sg),
Jianguo (Tony) Sun (2005-2007: tsun@stat.missouri.edu)

Term of reference:

Oversee the publication policy of the Association and make recommendations to the Board of Directors.

2007 Objective:

Coordinate the establishment of the new **ICSA Applied Journal**.

Constitution Committee:

Shein-Chung Chow (Chair), Chien-Pai Han

Term of reference:

Review the Association's Constitution and By-Laws and prepare a revision if necessary.

CURRENT COMMITTEES

Membership Committee:

Ouhong Wang (Chair 2007-2009, owang@amgen.com)
Jun Zhao (Chair 2006, J.Zhao@organonusa.com),
Gemai Chen (2005-2007, gchen@math.ucalgary.ca),
Shu Yan He (2005-2007, shu-yen.y.ho@gsk.com),
Shun-Yi Chen (2005-2007 sychen@math.tku.edu.tw),
Lixing Zhu (2005-2007, lzhu@hku.hk),
Ouhong Wang (2005-2007, WANG_OUHONG@Lilly.com),
Wei Shen (2005-2007, SHEN_WEI_X1@Lilly.com)

Term of reference:

Recruit new members and contact interested potential individuals and organizations.

2007 Objective:

Work with applied symposium, JSM and other opportunities to recruit new members, and try to send automatic membership fee renewal.

Awards Committee:

Jianping Dong (Chair 2007),
Wen-Jang Huang (2004-06), Zhaohai Li (2004-06), Jane-Ling Wang (2004-06),
Lingshi Tan (2005-2007), Hanfeng Chen (2005-2007), Gang Zheng (2005-2007)

Term of reference:

Accept, evaluate, and recommend nominations for ICSA various awards.

2007 Objectives:

- (1) Recommend Service and Achievement Awards candidates to the Board.
- (2) Retrieve historical Award recipients list to be published on the ICSA Web.

Communication Committee:

Don Sun (Chair, Web), Hubert Chen (Listserv), Li-An Xu (2004-2006)

Term of reference:

Evaluate the database and use of internet.

2007 Objective:

Improve and develop ICOSA web system.

2007 Applied Statistics Symposium Committee:

Shuyen Ho (co-chair, syh71094@gsk.com) and **Danyu Lin** (co-chair, lin@bios.unc.edu)

Term of reference:

Organize the Applied Statistics Symposium, June 3-6, 2007, Raleigh, North Carolina.

Book and Journal Donation Committee:

Tar Timothy Chen (Chair)

Term of reference:

Solicit book and journal donations and to arrange their delivery to universities or colleges in need.

Annual Meeting Committee:

Xiaoming Sheng (Chair, 2007) (xiaoming@hrc.utah.edu)

Term of reference:

Plan and coordinate and arrange the August annual meeting at the 2007 JSM in Utah.

Archive Committee:

Ivan Chan (Chair 2007), Smiley Cheng, Shein-Chung Chow, Nancy Lo, Naitee Ting

Term of reference:

Plan and implement electronic archive for the Association

Strategic Committee:

Jiahua Chen (Chair), Frank Shen, Zhiliang Ying, William W.S. Wei, Chao Agnes Hsiung, Chien-Pai Han, Tar Timothy Chen, Jeff C. F. Wu, Shein-Chung Chow, Kuang-Fu Cheng, Smiley Cheng, Chiao Yeh, Yuan A. Chow, Jack C. Lee, Grace Yang, Jia-Yeong Tsay, James Fu, George Tiao

Term of reference:

Plan long-term strategies for the Association.

BIOMETRICS SECTION (2007)

Greg Wei (Chair, 2007)

Naitee Ting (Former Chair, 2006), Sue Jane Wang (Former Chair, 2005)

From the Current President, ICOSA

Jun Shao, Ph.D.

Dear friends and ICOSA members:

Happy New Year! The year of 2006 was another very successful year for our organization, thanks to the efforts of our Ex-President Yi Tsong, Ex-Executive Secretary Ivan Chan, other ICOSA Officers, Board of Directors, and Committees, and thanks to support from all of you. Under President Yi's direction, the ICOSA website has been greatly improved. A research committee (chaired by Naitee Ting) continued to study the needs of an applied statistical journal that can better serve our members. The ICOSA Bulletin continued to be a successful journal, thanks to the hard work of the Bulletin Editor Tzu-Cheg Kao. For the first time, the ICOSA began to work on the establishment of a central office, thanks to the joint effort from Naitee Ting and Karl Peace of the Jiann-Ping Hsu College of Public Health at Georgia Southern University.

Now, we are opening the New Year 2007 and I have started my service as the President of ICOSA with the new management crew including the new Executive Secretary Ming-Hui Chen and many new board members and committee chairs and members. As usual, we have a plenty to looking for in a new year. First, we need to work on the creation of the new applied statistical journal of our own, which will publish statistical articles of applications in the fields most relevant to the professional lives of ICOSA members. With the experience we have with our current journal, *Statistica Sinica*, we are confident that the new created journal will be successful. Second, we will work on an agreement between the ICOSA and the Georgia Southern University for the ICOSA central office and the details of the operation of this central office. Third, we will continue to improve the ICOSA website to create more online services such as statistical forum, membership payment on line and conference/ symposium registration etc. Finally, despite all the effort from the management staff, there are always some specific services that are missed. We would like to hear from you and improve our services.

I would like to take this opportunity to thank you all for your supports to ICOSA. I look forward to working with all of you, and seeing you in the Applied Statistics Symposium at Raleigh, North Carolina and the JSM at Salt Lake City, Utah.

Sincerely yours,

Jun Shao
608-262-3720
email: shao@stat.wisc.edu

Message from the Past President Yi Tsong, Ph.D.

Dear friends:

Happy New Year! I would like to take this opportunity to wish you all the best for the New Year! I want also thank you all for your supports to ICSA. At the end of 2006, I completed my tour of duty as the president of the International Chinese Statistical Association. Year 2006 is a successful year for ICSA. First, thanks to Professor Ming-Hui Chen of University of Connecticut and his committees, we had an extremely successful symposium in June with record-breaking attendance. Our second association gathering at Seattle was also a great success. We are excited with many of the plans made to improve the service that ICSA may provide to its members. First, the planning committee of ICSA applied statistical journal led by Dr. Naitee Ting has been actively working to finalize a proposal. Second, Professor Karl Pease of Georgia State University proposed to offer some university facilities to be used by ICSA as permanent office. That means ICSA does not need to be move around in every three years for communication, for financial report filing and for storage. Third, led by Prof. Chen of University of Connecticut, an overhauling of ICSA website is in the progress in order to provide more services to ICSA members in a more efficient ways. Currently, there are many exciting new ideas that the ICSA committees are working on in order to improve the services to our members that we will all be looking forward to in the new years.

On the other hand, it is time to say "thank you" to many of our officers. They have done great jobs during their tenure of responsibilities. First, let us thank Dr. Ivan Chan of Merck for his unselfish and diligent works as the Executive Director of ICSA for the last three years. He handled the daily function of the association and made sure that everything is planned out and carried out on time. Dr. Wei-ying Yuan has completed her tour of duty as the Treasurer of ICSA. Her careful and diligent works assured us that the association fund was in the solid ground and made clear to IRS that there was no ambiguity in ICSA finance. We also need to thank all the board member that served for the association for three years for their participation in the planning and management of business of ICSA. Let us give them three cheers for their memorable contributions.

Very luckily, we found replacements of the officers and board members for the future years. As you have already known, Prof. Jun Shao of University Wisconsin will lead the association in 2007. Prof. Ming-Hui Chen of University of Connecticut will take over the responsibilities as the Executive Director. Dr. Yusong Chen, Ph.D. of AstraZeneca LP will step in to serve as the Treasurer. We also have very good choices of the new board members. What a good year we are looking forward to!!!

Sincerely yours,

Yi Tsong, 703-471-8461
email: yi.tsong@fda.hhs.gov

From the New Executive Director, ICSA Ming-Hui Chen, Ph.D., Professor

My term as the executive director of ICSA starts from January 1, 2007 and ends on December 31, 2009. During the past one and half months, I have been closely working with the previous ICSA executive director, Dr. Ivan S. F. Chan, to make a smooth transition. I am very grateful of Ivan's help. I have learned a lot from him in various aspects on how the ICSA as a nonprofit organization operates and on what I need to do as the executive director.

My main job being the executive director is to assist the ICSA president to execute various association operations. I am pleased to report that during the first month of 2007, Professor Jun Shao, the current ICSA president, has been working very hard to appoint or re-appoint chairs of various ICSA committees. By now, most of the ICSA committees have been in place and we are in a great shape as an organization.

Looking ahead, we will have a busy and prosperous year 2007 with full of ICSA activities. ICSA is a proud sponsor of the 15th International Conference of Forum for Interdisciplinary Mathematics on Interdisciplinary Mathematical & Statistical Techniques (**IMST 2007**, <http://www.imst2007.southalabama.edu/>), which will be held jointly with University of Science and Technology of China in Shanghai during May 20-23, 2007. The **2007 ICSA Applied Statistics Symposium** will be held in Raleigh, North Carolina during June 3-6, 2007. The Institute of Statistical Science, Academia Sinica, will host the **2007 Taipei International Statistical Symposium and ICSA International Conference** from 25 to 27 June 2007, jointly organized by the Institute of Statistical Science, the Directorate-General of Budget, Accounting and Statistics (DGBAS), Executive Yuan, R.O.C., the Chinese Statistical Association, and the International Chinese Statistical Association (ICSA). As usual, we will have annual ICSA elections in June and July 2007 and we will also have another opportunity to meet each other in the August annual meeting at the JSM, which will be held July 29 - August 2, 2007 in Utah. I hope that you, a member of ICSA, will actively participate some or all of these activities.

As we continue to update and improve our membership database, please take a moment to check your membership information at the ICSA website and make necessary updates. Please notice that as an ICSA member, you have access to electronic versions of all issues of Statistica Sinica from the ICSA website. Please contact Ouhong Wang (Membership Committee Chair, email: owang@amgen.com) or me (email: mhchen at stat.uconn.edu) if you forget your login ID or password.

You are very welcome to contribute your helps in various ICSA meetings or activities, to serve on ICSA committees, and to make suggestions for improving ICSA. Please feel free to write or call me to discuss anything you would like regarding ICSA.

My contact information is given as follows:

Ming-Hui Chen, Ph.D.
Professor of Statistics
Department of Statistics
University of Connecticut
215 Glenbrook Road, U-4120
Storrs, CT 06269-4120, USA
Phone: (860) 486-6984
Fax: (860) 486-4113
email: mhchen at stat uconn edu

Best wishes to all of you in 2007.

From the Past Executive Director, ICSA Ivan S. F. Chan, Ph.D.

Dear ICSA Members,

Happy new year! We had a very successful year in 2006, and I would like to thank all of you for your support of ICSA activities. The Applied Statistics Symposium held at the University of Connecticut in the summer had a strong technical program, attracted a record number of participants, and was very well run. I would like to extend my sincere thanks to the symposium committee (chaired by Ming-Hui Chen and Greg Wei) for their tremendous efforts in making this meeting a wonderful experience. We also held two very productive board meetings and two general membership meetings (at the ICSA symposium and at the JSM) where many important issues concerning the operation and future development of ICSA were discussed.

Working jointly with Statistica Sinica, we have created electronic access to all issues of Statistica Sinica for ICSA members through the ICSA website. This will allow the association to substantially reduce the shipping cost of the journals beginning in 2007. To access the electronic copy of Statistica Sinica from the ICSA website, please follow the 4 easy steps:

1. Go to www.icsa.org
2. Choose the "Membership" tab and double click on "Membership Only Area"
3. Enter your ICSA user id and password
4. Once you are logged in, you will see a link "Member-only access to Statistica Sinica" on the top of the web page. Double click on this link to access all issues of Statistica Sinica.

If you do not remember your ICSA user id or password, please contact our new Executive Director (Professor Ming-Hui Chen at mhchen@stat.uconn.edu) or our Membership Committee Chair (Dr. Jun Zhao at J.Zhao@organonusa.com).

In 2006 we elected several ICSA officers: 2007 President-elect, 2007 Biometrics Section Chair, and 6 members of the Board of Directors for 2007-2009. It is encouraging to see more members returning their ballots to me this year. The election results (see Table 1 below) have been announced at the General Members Meeting at the JSM in Seattle and posted on the ICSA web. I would like to express my sincere thanks to all of the candidates for their enthusiasm and support of ICSA, to the nomination committee for their great coordination, and to Dr. Jacksen Lou for helping with the electronic vote count. I would also like to congratulate the newly elected officers. As a separate note, there are 5 board members whose term ended in 2004 (Xihong Lin, Ming-Hui Chen, Jiqian Fang, Qiwei Yao, Hongyu Zhao). I thank them for their tireless efforts and generous support over the past 3 year, serving on the ICSA board.

My term as Executive Director of ICSA has ended in 2006. I really appreciated the opportunity to serve ICSA and enjoyed working with many of you in the last 3 years. I want to thank you for

your support. The new Executive Director is Professor Ming-Hui Chen, University of Connecticut, CT, USA. I am very pleased to see Ming-Hui's enthusiasm and commitment to ICSA in taking over this important position for the next 3 years.

I wish you have a successful year in 2007.

Ivan S. F. Chan
Merck Research Laboratories

Ivan S. F. Chan, Ph.D. is Director of Clinical Biostatistics, Biostatistics and Research Decision Sciences, Merck Research Laboratories, and he can be reached by sending him an e-mail to Ivan_Chan@Merck.Com

Table 1
2006 International Chinese Statistical Association (ICSA)
Election Results

| ICSA Office | Elected Officer |
|-------------------------------------|--|
| 2007 President-elect | WANG, Jane-Ling UC – Davids, USA |
| Directors of ICSA Board (2007-2009) | CHAN, Wai-Sum The Chinese University of Hong Kong, Hong Kong |
| | Li, Runze Pennsylvania State University, USA |
| | LIU, Aiyi National Institutes of Health, USA |
| | WANG, Mey Center for Drug Evaluation, Taiwan |
| | WANG, Yuedong UC - Santa Barbara, USA |
| | YANG, Yaning University of Science and Technology of China, PRC |
| 2007 Biometrics Section Chair | WEI, Greg Pfizer |

Program Committee Report (February, 2007)

Naitee Ting, Ph.D., Chair

ICSA had a very successful year in 2006. The Applied Statistics Symposium attracted over 300 participants in June at University of Connecticut, Storrs, CT. This symposium featured three keynote talks and two plenary talks. There were eight sets of nine concurrent oral presentation sessions (including 60 invited sessions and 10 contributed sessions) and one set of poster session. The symposium committee also scheduled for a mixer and a casino night. During the JSM at Seattle in August, we had our annual membership meeting, and a nice banquet. Around 200 members joined the banquet, and all participants enjoyed very much of the food, the music, and the network. Please refer to Professor Andrew Zhou's report in this Bulletin for more details. On behalf of the ICSA Program Committee, I would like to take this opportunity to thank Greg Wei and Ming-Hui Chen for co-chairing the 2006 ICSA Applied Statistics Symposium, and to thank Andrew Zhou for organizing the 2006 JSM banquet.

Looking ahead into 2007, we will also have excellent programs for our members. As most of you are aware of, every three years, ICSA runs an international conference. This conference is usually co-sponsored by ICSA with one of the local organizations in Asia. In the past, ICSA International Conferences took place at Beijing, Taipei, Hong Kong, Singapore, and a few other places. In 2007, this conference will be co-sponsored with the Institute of Statistical Science, Academia Sinica, and will take place at Taipei, in June 25-27, 2007. Name of this conference is "The 2007 Taipei International Statistical Symposium and ICSA International Conference". More details on this conference can be found at www.icsa.org

The 2007 Applied Statistics Symposium will take place in June 3-6 at Raleigh, North Carolina. Keynote speakers include Dr. Janet Woodcock (FDA) and Professor L.J. Wei (Harvard University). Banquet speaker will be Dr. Jim Goodnight (SAS Institute). There will be 6 short courses and over 45 invited sessions. The web information of this symposium can be found from www.icsa.org. Further questions regarding the ICSA 2007 Applied Statistics Symposium can be addressed to Shuyen Ho (phone: (919) 483-9879, email: shu-yen.ho@gsk.com) and/or Danyu Lin (phone: (919) 843-5134, email: lin@bios.unc.edu), co-chairs of this symposium.

One other conference ICSA is co-sponsoring for 2007 is the 15th International Conference of Forum for Interdisciplinary Mathematical and Statistical Techniques (IMST2007). This conference will take place in Shanghai between May 20 and 23, 2007.

The primary sponsors are Shanghai Institute of Advanced Study of University of Science and Technology of China. Please see the announcement of IMST2007 in this Bulletin. The conference website is also linked at www.icsa.org.

The 2007 JSM will take place in Salt Lake City, Utah. Based on our tradition, there will be an ICSA banquet on Wednesday evening (Aug. 1). Professor Xiaoming Sheng of the University of Utah will help coordinate this event.

I encourage every member to support our programs. Please select one or more of the above mentioned conferences, register and participate. If you have a paper to present, please submit to the conference as a contributed speaker. If you are interested in organizing a session, please contact the program committee and discuss your ideas with them. If you are looking for a job, then you really should take advantage of these meetings and network with other participants. Usually there are many job opportunities publicized in these meetings.

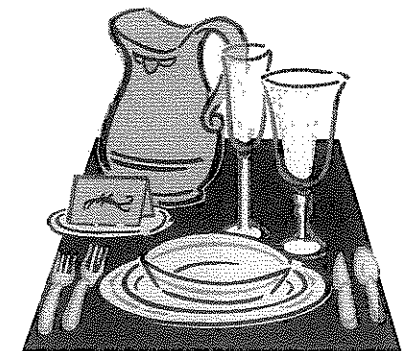
If there is any question about any of these conferences, please feel free to contact me or the corresponding program committee.

ICSA 2006 Banquet **Xiao-Hua Andrew Hou, Ph.D.**

The annual ICSA banquet was held on August 9, 2006 at the New Kowloon Seafood Restaurant in Seattle's Chinatown / International District, during JSM 2006. The banquet was graced with performances by renowned and winner of the Award of Excellent Performance in the 1995 Oriental Cup of National Juvenile Guzheng, Mary Ma. The audience also received a performance by Andrew Zhou, who played a piece accomplished by Mary Ma entitled "Two Butterflies" on his Erfu.

With beautiful weather, good food and the attendance of approximately 200 people, this banquet was a great success. With that being said there are many that I would like to acknowledge for their hard work in putting together this event. For their help in organizing the banquet as well as manning the ICSA booth, thank you to UW faculty (Ying Qing, Chen Hua Tang, and, Yingye Zheng), UW students (Liansheng Tang, Yueh-Yun Chi, Hongqi Xue, Yuying, Jin, Hui Chen, Lin Chen, Ranran Wang, Kim Young, and James Dai), UCLA student (Serena Suewei Chan), and from National Taipei University, Professor Hong-Long Wang. I would also like to thank Laura Rabuck for her excellent work in designing the tickets and maps for this event.

Xiao-Hua Andrew Zhou, Ph.D., Chair of the Banquet Organizing Committee
Professor, Department of Biostatistics
University of Washington
Director of Biostatistics Unit
VA Puget Sound Health Care System
Seattle, WA 98195





Andrew Zhou played his Erfu



Mary Ma played her Chinese zither

Lin Honored As American Society for Quality Fellow



UNIVERSITY PARK, PA (June 14, 2006) – The board of directors of the American Society for Quality (ASQ) has elected as a fellow Dennis Lin, University Distinguished Professor of Statistics and Supply Chain Management at Penn State's Smeal College of Business.

Lin was honored for his outstanding leadership and innovation in the fields of quality and statistics as an educator, practitioner, and integrator with other disciplines, specifically in the areas of supply chain management, data mining, experiment design, quality engineering, statistical process control, and reliability.

The American Society for Quality has more than 100,000 individual and organizational members and is widely recognized as the world's leading authority on quality. ASQ Fellows are elected based upon having achieved professional distinction and pre-eminence in the technology, theory, education, application, or management of quality control.

Since he joined the Smeal College in 1995, Lin has published more than 100 journal articles and has served on editorial boards of the top journals in his field. He is an elected fellow of the American Statistical Association, an elected member of the International Statistical Institute, a lifetime member of the International Chinese Statistical Association, and a fellow of the Royal Statistical Society. He is an honorary chair professor for several universities, including National Chengchi University in Taiwan, Fudan University (Shanghai), Remin University of China, and Xian Statistical Institute in China. He received his doctorate in statistics from the University of Wisconsin and a Bachelor of Science degree from National Tsing Hua University in Taiwan.

For a complete list of the ASQ honorees, visit
<http://www.asq.org/media-room/news/2006/06/20060607-asq-fellows.html>.



Report of Hong-Kong Regional Activity in 2006

By Hailiang Yang

Here I report some of the activities of 2006 from the Hong Kong statistical community. I apologise for any missing information.

Public Lecture by Professor Sir Clive Granger, Nobel Laureate in Economics, 2003

Professor Sir Clive Granger, Nobel Laureate in Economics, 2003, delivered a public lecture at Department of Statistics and Actuarial Science of the University of Hong Kong on March 31, 2006. The title of the public lecture is "The Future of Economic Forecasting". Professor Granger is a Professor Emeritus at University California, San Diego.

Patrick Poon Lecture Series in Actuarial Science

Professor Jef Teugels of Catholic University of Leuven, Belgium delivered a public lecture in the Patrick Poon lecture series in actuarial science at the department of Statistics and Actuarial Science of the University of Hong Kong on November 3, 2006. The title of the lecture is "On Reinsurance". The Patrick Poon lecture series in actuarial science was established in 2004, thank to Patrick Poon for his donation. So far, a number of world wide well known Professors in actuarial science have given a lecture in this lecture series, including: Hans Gerber of University of Lausanne, Marc Goovaerts of Catholic University of Leuven, Harry Panjer of University of Waterloo and Elias Shiu of University of Iowa.

International Workshop on Scientific Computing: Models, Algorithms and Applications, 7-9 December 2006, Hong Kong

The workshop was organized by Wai-Ki Ching, Wing K. Fung, Philip L.H. Yu and Siu-Pang Yung. 14 invited speakers delivered their talks.

International Workshop on Econometric Time Series, 15-16, January 2007, Hong Kong

The workshop was jointly organized by Department of Statistics and Actuarial Science of the University of Hong Kong, Hong Kong Statistical Society and

Department of Econometrics and Operational Research of Free University of Amsterdam.

Professor Zhi-Ming Ma visited Hong Kong

Professor Zhi-Ming Ma of Institute of Applied Mathematics, AMSS, Chinese Academy of Sciences visited Hong and delivered public lectures at Hong Kong University of Science and Technology, The University of Hong Kong and Hong Kong Baptist University in December 2006.

Professor Ma is an elected vice President of International Mathematician Union, Academician of Chinese Academy of Sciences, and fellow of Third World Academy of Sciences.

ICSA 2007 Applied Statistics Symposium

June 3 - 6, 2007 at Sheraton Raleigh Hotel, Raleigh, NC, U.S.A.

The ICSA Applied Statistics Symposium Program Committee invites you to participate in the 16th annual ICSA Applied Statistics Symposium at the Triangle Area in North Carolina.

LOCATION: The Triangle Area roughly connects Raleigh, Durham, Chapel Hill, and Cary with a diverse population of over a million residents. In the middle of this area is the Research Triangle Park, home to many research high-tech companies and enterprises such as GlaxoSmithKline, IBM, and Cisco System. "The Triangle" originally referred to the three major research universities – North Carolina State University, Duke University, and the University of North Carolina at Chapel Hill that are located in this area, whose research facilities and the educated workforce they provide are the major attraction for businesses located in the Park. The Triangle's population is the most educated in the United States with the highest density of PhDs. The Triangle has been recognized many times by national publications as one of the best places to live and raise family.

The Sheraton Raleigh Hotel is in the heart of downtown Raleigh. It is close to the State Capitol, museums, restaurants, and nightlife.

DATE: June 3 to 6, 2007 (Sunday to Wednesday).

REGISTRATION AND ACCOMMODATION: Please visit www.icsa.org to register on line and make room reservation for either **Sheraton Raleigh Hotel** in downtown Raleigh or **Wolf Village** of North Carolina State University.

KEYNOTE & BANQUET SPEAKERS: Dr. **Janet Woodcock** (FDA Deputy Commissioner), Professor **LJ Wei** (Harvard University), and Dr. **James Goodnight** (SAS Founder & CEO).

PROGRAM HIGHLIGHT: There are 6 short courses covering Mixed-Effects Models, Adaptive Designs, New Regression Techniques in SAS, Pharmacogenomics/Pharmacogenetics, Survival Analysis, and Analysis of Multivariate Failure Time Data, please see details on separate pages in this issue. There are also over 45 invited sessions covering topics on Clinical Trials and various Analysis Methods and Issues, Drug Development, Translational Medicines, Adaptive Designs, Genetics/Genomics, Epidemiology, Bayesian, Medical Imaging, Longitudinal Data and Mixed Models, Regulatory, Business, Economics, High Dimensional Data, and so on. Please see program overview on separate pages and visit www.icsa.org for additional details.

ICSA STUDENT AWARDS AND TRAVEL GRANTS: The Symposium will sponsor up to four student awards and travel grants, including the **J.P. HSU MEMORIAL STUDENT SCHOLARSHIP**. The submission deadline is **April 1, 2007**. Please read details on separate pages in this issue.

2007 APPLIED STATISTICS SYMPOSIUM COMMITTEE:

Shuyen Ho (Co-Chair), shu-yen.ho@gsk.com, (919) 483-9879

Danyu Lin (Co-Chair), lin@bios.unc.edu, (919) 843-5134

Shein-Chung Chow, SheinChung.Chow@duke.edu, (919) 668-7523 – Program, Short Courses, Student Awards/JP Hsu Memorial Scholarship

James Hung, HUNG@cder.fda.gov, 301-796-1092 -- Program

Qiming Liao, Qiming.m.liao@gsk.com, 919-483-2387 – Program, Short Courses

Patrick Liu, Patrick.liu@schwarzbiosciences.com, 919-767-2546 – Secretary, Logistics

Yu Lou, Yu.9.lou@gsk.com, 919-483-5428 – Program, Fund Raising, Entertainment

Sue-Jane Wang, Sujane.wang@fda.hhs.gov, 301-796-0831 -- Program

Linda Yau, Linda.h.yau@gsk.com, 919-483-0790 -- Program, Registration

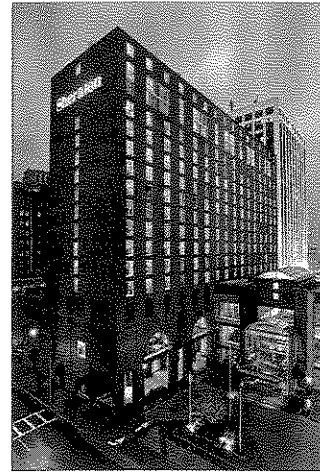
Zhao-Bang Zeng, zeng@statgen.ncsu.edu, 919-515-1942 – Program, Website

Daowen Zhang, dzhang2@stat.ncsu.edu, 919-515-1933-- Program

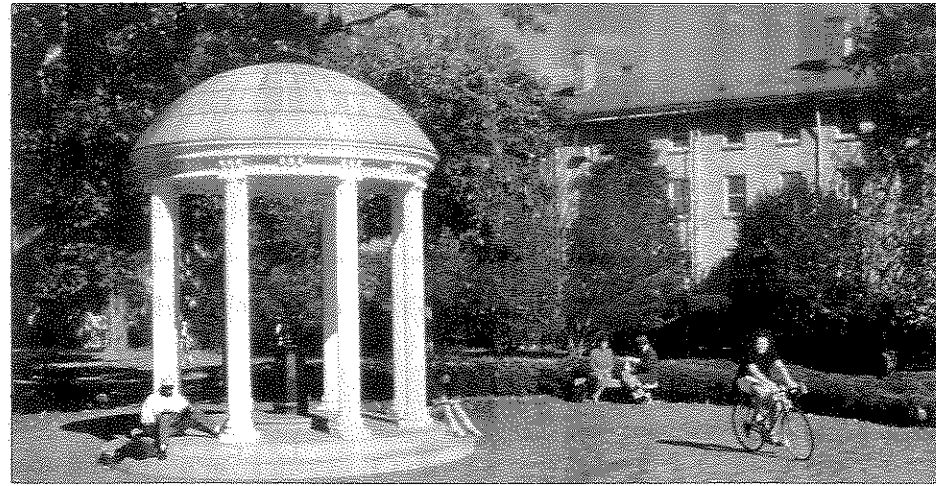
Henry Zhao, Henry.h.zhao@gsk.com, 919-483-1130 – Treasurer, Fund Raising

Hui Zhi, Hui.2.zhi@gsk.com, 919-483-9989 – Program, Website, Flyer

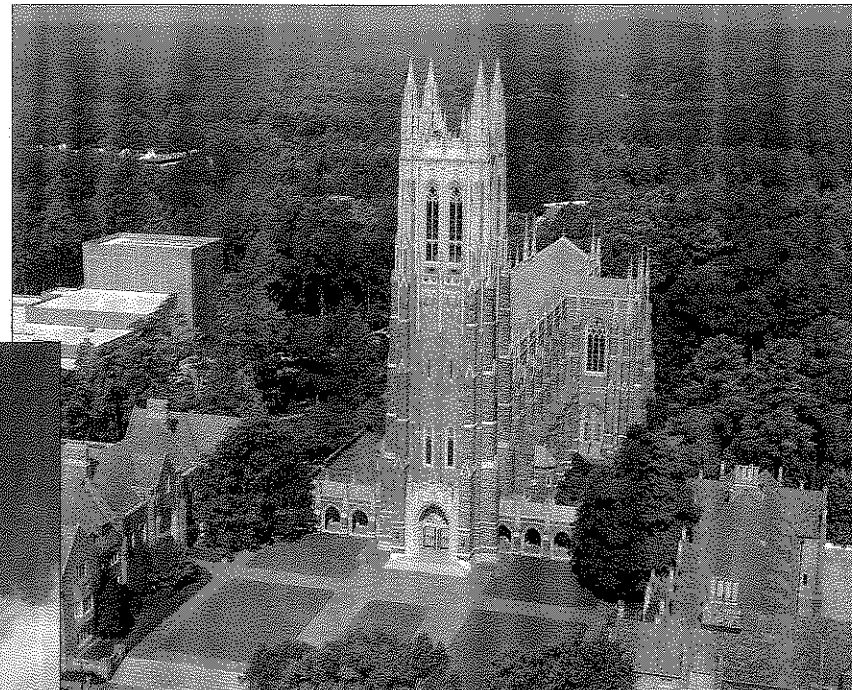
HaiBo Zhou, Zhou@bios.unc.edu, 919-966-3885 – Program



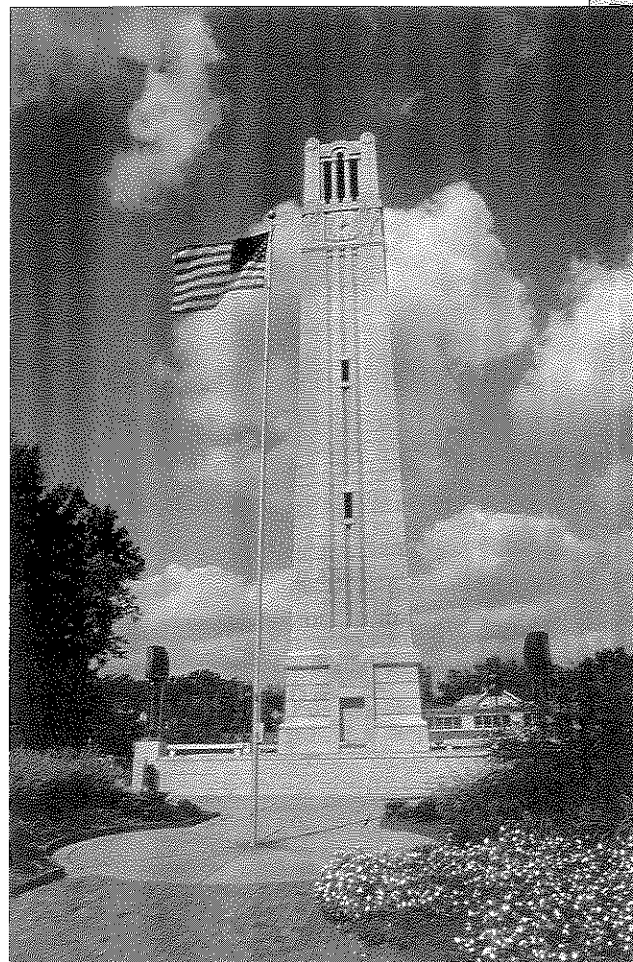
Sheraton Raleigh



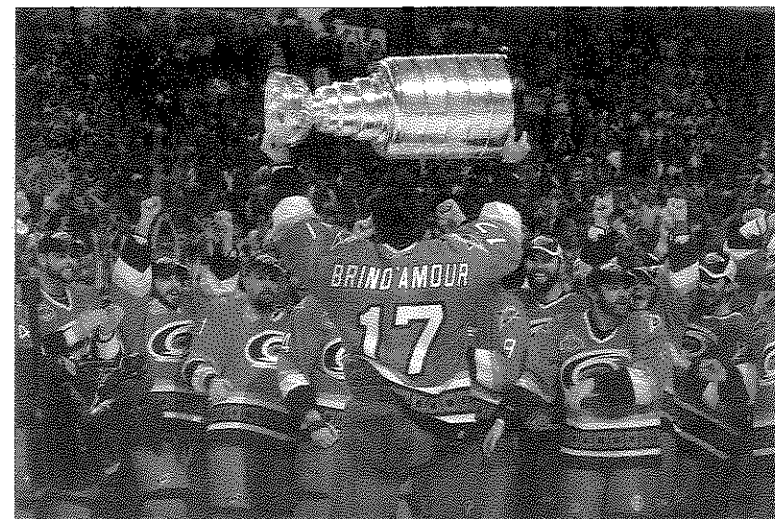
University of North Carolina at Chapel Hill Campus



Duke Chapel Skyview



NCSU belltower



Hurricanes with cup

Course A: Mixed Effects Models for Longitudinal Data

Instructor: Dr. James Rochon
Research Professor at the Duke Clinical Research Institute

Course Description

This course is designed to update your knowledge and skills for analyzing repeated measures and longitudinal data in biomedical research. It is directed at Master's and Ph.D. biostatisticians who are heavily engaged in analyzing data on a day-to-day basis. We provide enough theory to bring you up to speed and allow you to follow trends in the literature. Practical computer examples using PROC MIXED in SAS are also presented.

First, a brief review of biostatistical concepts in repeated measures designs and longitudinal data is presented. Then, we turn to statistical methods that have come into common use over the past 20 years. They include random-coefficient regression models, and mixed-effect models for longitudinal data. Fixed-effects vs. random effects are discussed with special emphasis on how to treat clinical sites in multi-center investigations. ML and REML estimation procedures are contrasted. The application of these techniques to group-randomized designs and hierarchical models (if time permits) is provided.

About the Instructor

Dr. James Rochon is a Research Professor at the Duke Clinical Research Institute in Durham, NC. He received his Ph.D. from the University of North Carolina at Chapel Hill in 1985. He is the Principal Investigator for the Coordinating Center for a number of multi-center, NIH studies including the CALERIE and DILIN networks. He has published methodological papers on repeated measures studies in a number of journals including *Biometrics*, *Journal of the American Statistical Association*, *Journal of the Royal Statistical Society* and elsewhere. They include methods for performing sample size calculations at the design stage and covariance structures at the analysis stage... His current research interest lies in adjusting for confounders arising post-randomization in clinical trials.

Course B: Adaptive Design Methods in Clinical Trials

Instructor: Dr. Mark Chang
Millennium Pharmaceuticals, Inc.

Course Description

Objectives: Learn statistical methods for various adaptive designs; learn how to design adaptive trials – all the steps including how to use the SAS macros provided; explore the challenges in the implementations of adaptive designs. Ultimately, the students are expected to walk a way with the right knowledge and tools to start designing adaptive trials.

An adaptive design is a design that allows for modifications to the on-going trial based on either the observed data from the trial or external information. It is recognized that adaptive designs can improve the efficiency of a trial design and increase the probability of success. In this section of the workshop, we will study different adaptive designs including: (1) sample-size reestimation, (2) changes in the timing and the number of analyses, (3) drop-loser design, (4) response-adaptive randomization, (5) Biomarker-adaptive design, and (6) adaptive dose-escalation design. Different methods for these adaptive designs are discussed through trial examples. In addition to the theoretical discussions, we will use SAS macros and R functions provided to go through with you the various adaptive designs. Finally we will discuss the challenges of the design implementation and provide suggestions.

About the Instructor

Dr. Chang has years of experience as a statistician in the field of clinical trials in addition to years of teaching experience. Chang's most recent publications are mainly on adaptive designs and he co-authored the book "Adaptive Design Methods in Clinical Trials" in 2006. As the director of Biostatistics, his involvements in drug development at Millennium include both strategic and methodological aspects. As a technical resource in the biostatistics department at Millennium, he has lead and conducted numerous computer simulations for clinical trials and provided quantitative assessments for clinical development programs to assist in decision making.

Course C: New Regression Techniques in SAS

Instructor: Dr. Colin (Lin) Chen
SAS Institute Inc.

Course Description

This short course mainly introduces new developments on regression techniques in SAS. As a warm-up, we briefly go over ordinary least squares regression and general linear models by some examples using the SAS/REG and SAS/GLM procedures. Then, we will focus on the regression techniques developed recently in SAS, robust regression and quantile regression.

Robust regression, which is covered in the SAS/ROBUSTREG procedure, detects outliers and provides resistant results in the presence of outliers. Quantile regression, which is covered in the SAS/QUANTREG procedure, computes conditional quantile functions and conducts statistical inference on regression quantiles without any distributional assumptions.

Statisticians and data miners, who need to analyze messy data or heterogeneous data, will learn to select from the estimation methods available in these SAS procedures and interpret diagnostic results provided in the output. You will also learn to explore the heterogeneity of both cross-sectional and longitudinal data, and interpret the quantile effects and quantile processes. In addition, basic and advanced features of these procedures will be presented with examples, including the construction of growth charts for medical measurements.

This course requires basic knowledge of linear regression models.

About the Instructor

Dr. Colin (Lin) Chen received Ph.D. in Statistics and MS in Computer Science from Purdue University, West Lafayette, Indiana. He joined SAS Institute Inc., Cary, North Carolina in 1998 and is currently a Senior Research Statistician at SAS. He supports the QUANTREG, ROBUSTREG, LIFEREG, and PROBIT procedures in SAS/STAT. His research interests include Robust Statistics, Quantile Regression, Bayesian Computation, Survival Analysis, Growth Charts, Goodness of Fit, and Monte Carlo Simulation. He has published over a dozen papers.

Course D: Pharmacogenomics/Pharmacogenetics and Their Utility in Clinical Studies

Instructor: Dr. Sue-Jane Wang
U.S. Food and Drug Administration

Course Description

Recently, there is an enthusiastic interest and desire to incorporate presumed genomic biomarker in early to late phases medical product development program. The entire medical product development program consists of exploratory and confirmatory phases. In this short course, exploration of pharmacogenomics/pharmacogenetics studies from drug discovery to drug development will be presented. This leads to the discussion of biomarker qualification. Prospective vs. retrospective study designs and rationales in exploratory versus confirmatory studies in the context of pharmacogenomics and pharmacogenetics will be illustrated. Pharmacogenomics clinical trials that use genomic/genetic composite biomarkers to adapt sensitive patient subpopulations will be elucidated using scenarios to highlight the often misused designs that should be avoided. The diagnostic tools that use individual genomic/genetic profiles may serve to identify responsive patients aiming at enrichment of study patients or personalized medicine. The goal and utility of therapeutic/diagnostic co-development in pharmacogenomics or pharmacogenetics clinical trials will be introduced. The statistics metrics for repeatability, reproducibility and standardization of a genomic/genetic diagnostic test will be discussed.

About the Instructor

Dr. Sue-Jane Wang is currently Associate Director, Office of Biostatistics, Office of Translational Sciences, Center for Drug Evaluation and Research, U.S. Food and Drug Administration. She has been with FDA for more than a decade. Dr. Wang works with statistical reviewers serving all medical divisions in CDER on adaptive clinical trial designs and pharmacogenomics/pharmacogenetics trials. Dr. Wang's research interest and publications in recent years have been focusing on adaptive/flexible clinical trial designs, noninferiority trials, pharmacogenomics/pharmacogenetics trials that make use of genomic/genetic composite biomarker classifier. Her collaborative research has resulted in more than 70 professional publications. She is an Editor in Chief of *Pharmaceutical Statistics Journal*.

Course E: Introductory Survival Analysis

Instructor: Prof. Jianwen Cai
University of North Carolina at Chapel Hill

Course Description

The course will introduce the basic concepts in the analysis of survival data. It will be oriented toward application and interpretation of various methodologies. Examples will be drawn mostly from medical and epidemiologic research. Course topics include censoring, Kaplan-Meier estimation, logrank test, Cox regression model, time-dependent covariates, stratification, and left truncation. No previous knowledge of survival analysis is required, although participants should have a good working knowledge of basic principles of statistical inference and linear regression. The course will emphasize applications with SAS, but lecture notes using Splus will also be available.

About the Instructor

Dr. Jianwen Cai is Professor and Associate Chair of Biostatistics at the University of North Carolina at Chapel Hill. She received her Ph.D. from the University of Washington in 1992. After graduation, she joined the Department of Biostatistics at the University of North Carolina at Chapel Hill, where she teaches graduate statistics courses, conducts statistical methodology research, and participates in collaborative research in public health. She was promoted to Associate Professor in 1999 and to Full Professor in 2004. Professor Cai is an elected fellow of the American Statistical Association. She currently serves as an Associate Editor for *Biometrics* and *Lifetime Data Analysis*.

Professor Cai's research interest includes survival analysis and regression models, design and analysis of clinical trials, analysis of correlated responses, cardiovascular disease research, and epidemiological models. Professor Cai has published over 90 scientific papers and made important contribution to statistical methodology, especially in the area of methods dealing with multivariate failure time data, and to obesity and cardiovascular disease research.

Course F: Analysis of Multivariate Failure Time Data

Instructor: Prof. Danyu Lin
University of North Carolina at Chapel Hill

Course Description

Multivariate failure time data arise when each study subject can potentially experience multiple events or when there exists clustering of subjects such that failure times within the same cluster are correlated. Major complications in analyzing such data include the dependence among related failure times and censoring due to limited follow-up or competing events. This short course presents a variety of statistical models and methods for the analysis of these data. We discuss both marginal and frailty models, paying primary attention to semiparametric regression methods. Relevant software will be described. A number of clinical and epidemiologic studies will be provided for illustrations.

About the Instructor

Dr. Danyu Lin received his Ph.D. from the University of Michigan in 1989. After one-year post-doc at Harvard, he joined the University of Washington Department of Biostatistics, where he was promoted to Associate Professor in 1994 and to Professor in 1998. Dr. Lin moved to the University of North Carolina at Chapel Hill in 2000 to become the first Dennis Gillings Distinguished Professor of Biostatistics. Dr. Lin has published more than 100 papers, most of which have appeared in leading statistical journals. He was identified by Thomson ISI as one of the world's most highly cited researchers in mathematics. Dr. Lin is an internationally recognized leader in survival analysis, especially the analysis of multivariate failure time data. He has received numerous awards and honors, including the Mortimer Spiegelman gold medal from the

American Public Health Association, Fellow of the ASA, Fellow of the IMS, JASA-Theory and Methods discussion papers and JRSS(B) discussion paper. He has served as a consultant to the FDA since 1997.

ICSA 2007 Applied Statistics Symposium Student Awards & Travel Grants

The 2007 Annual ICSA Applied Statistics Symposium will be held during **June 3-6, 2007** at the **Sheraton Raleigh Hotel in downtown Raleigh, North Carolina, USA**. The Symposium will sponsor the Student Awards and Travel Grants. The main purpose of the award is to encourage student members of ICSA to participate and present their research work at this annual meeting.

Qualifications: The student must be an ICSA member (or join at the time of manuscript submission), a degree candidate in any term during the academic year 2006-2007 at an accredited institute and be able to register and present the work at the 2007 symposium.

Manuscripts should be prepared double spaced using Biometrics or JASA guidelines for authors. They must be no more than 20 pages in length exclusive of tables and figures. Use one-inch margins and no smaller than 12 point type. The work must be relevant to applications in a variety of fields including biomedicine, business, etc. The manuscript may be co authored with a faculty adviser and/or a small number of collaborators, although the student must be the first author.

Review and Selection Process: The members of Student Award Committee and J. P. Hsu Memorial Scholarship Committee will receive blinded copies of the submitted manuscripts from the Committee Chairs and review them based on the following criteria:

- The manuscript should be well motivated by an application relevant to the specific field(s).
- The methodology developed should be applicable to the motivating problem. Inclusion of an application of the

proposed methodology to a particular study will be favorably considered.

- Organization and clarity of the presentation will be considered as well.

Up to 4 award winners will be selected by the Awards Committees.

Each winner will receive a certificate, \$400, and tuition for one short course of his/her choice. Winners will be notified around **April 30, 2007**.

Submission of Manuscripts: Manuscripts should be received and postmarked no later than **April 1, 2007**. The submission should include:

- A cover letter
- One complete title page with author(s), institutional affiliation, mailing address, phone/fax numbers and email address
- Five copies of the manuscripts with only a title, but no information on authors or affiliation, on the first page
- Two copies of abstract
- Two copies of the ICSA membership application for non-members

Membership forms can be downloaded from <http://www.icsa.org>.

All materials should be mailed to:

Professor Shein-Chung Chow
(sheinchung.chow@duke.edu)
Department of Biostatistics and Bioinformatics
2400 Pratt Street
Room 0311 Terrace Level
Duke University
Durham, NC 27705
USA

ICSA 2007 Symposium Program Overview
June 3-6 2007 (Sunday – Wednesday)
Sheraton Raleigh Hotel, Raleigh North Carolina

| Sunday, June 3, 2007 | |
|---|---|
| 7:30 am – 9:00 am | Breakfast |
| 8:00 am – 6:00 pm | Registration |
| 9:00 am – 5:00 pm | Exhibits |
| 12:15 pm – 1:30 pm | Lunch (provided for all short course participants) |
| 9:00 am – 12:15 pm & 1:30 pm – 4:45 pm (Coffee Breaks: 10:30 am – 10:45 am, 3:00 pm – 3:15 pm, Lunch: 12:15 pm – 1:30 pm) | Short Courses (can be registered separately without Symposium) |
| | Instructor |
| A. Mixed-Effects Models for Longitudinal Data (1-day) by James Rochon , Duke U. School of Medicine | e-mail James.Rochon@duke.edu |
| B. Adaptive Design Methods in Clinical Trials (half-day, AM) by Mark Chang , Millennium Pharmaceuticals, Inc | mark.chang@mpi.com |
| C. New Regression Techniques in SAS (half-day, PM) by Colin Chen , SAS Institutes | lin.chen@sas.com |
| D. Pharmacogenomics/Pharmacogenetics and Their Utility in Clinical Studies (half-day, PM) by Sue-Jane Wang , FDA | suejane.wang@fda.hhs.gov |
| E. Introductory Survival analysis (half-day, AM) by Jianwen Cai , UNC-CH | cai@bios.unc.edu |
| F. Analysis of Multivariate Failure Time Data (half-day, PM) by Danyu Lin , UNC-CH | lin@bios.unc.edu |
| 5:30 pm – 8:00 pm | ICSA Board Meeting (by invitation only) |
| 7:30 pm – 10:30 pm | Mixer; Cash Bar |
| Monday, June 4, 2007 | |
| 7:30 am – 8:40 am | Breakfast |
| 7:30 am – 4:30 pm | Registration |
| 9:00 am – 5:00 pm | Exhibits |
| 8:40 am – 9:00 am | Opening Remarks: Shuyen Ho (GSK), Danyu Lin (UNC), GSK VP |
| 9:00 am – 10:00 am | Keynote Address – Dr. Janet Woodcock (FDA, "FDA Critical Path") Chair: Sue Jane Wang (FDA) |
| 10:00 am – 10:20 am | Break |
| 10:20 am – 11:50 am | Concurrent Sessions (1) |
| | A. Statistical Analysis of Genetic Data, Gang Zheng (NIH), Zhaohai Li (George Washington U), Yongzhao Shao (NYU), Dmitri Zaykin (NIH-RTP), Min Lin (Duke) |
| | B. Application of Non- and Semiparametric Methods in Economics, Lijian Yang (Michigan State), Mihails Levins (Purdue U), Rong Liu (Michigan State), Stefan Sperlich (U Goettingen), Jing Wang (UI-Chicago) |
| | C. Recent Advances in Survival Analysis with Complex Biomedical Data, Limin Peng (Emory U), Yu Cheng (U Pittsburgh), Yijian Huang (Emory U), Jun Yan (U Iowa), Guosheng Ying (MD Anderson Cancer Center) |
| | D. Statistical Issues in Clinical Trials with Multiple Co-primary Endpoints, Ling Chen (FDA), Christy Chuang-Stein (Pfizer), Mohammad Huque (FDA), Xujie Yu (Novartis) |
| | E. Impact of Pharmacogenetics on Drug Development, Meg Elhm (GSK), Alan Menius (GSK), Ann Saunders (GSK), Sandra C Kirkwood (Lilly), David Goldstein (Duke), Matt Nelson (GSK) |
| | Organizer, Chair, Speakers |

| Tuesday, June 5, 2007 | |
|-----------------------|---|
| 11:50 am – 1:30 pm | F. Bayesian Methods for Clinical Trials -- from Efficacy, Safety Considerations to Computational Tools, Xin Zhao (Merck), Thomas Neil (Pfizer), Larry Gould (Merck), Michael O'Connell (Insightful) Lunch (on your own) |
| 1:30 pm – 3:00 pm | Concurrent Sessions (2) |
| | A. Statistical Issues in Brain Imaging Data, Hongtu Zhu (UNC), Keith Worsley (McGill U), Moo Chung (U Wisconsin), Dubios Bowman (Emory U), Hongru Zhu (UNC), Keith Worsley (McGill U) |
| | B. Nonparametric dose-finding, Bin Cheng (Columbia), Anastasia Ivanova (UNC), Yuan Ji (MD Anderson Cancer Center), Ken Cheung (Columbia) |
| | C. Recent Development on Variable Selection and Dimension Reduction with Applications on High Dimensional Data Mining, Hao Helen Zhang (NC State), Ming Yuan (Georgia Tech), Yufeng Liu (UNC), Lexin Li (NC State), Yichao Wu (Princeton), Hongmei Yang (NC State) |
| | D. Recent Advances in Analyzing Correlated Data, Lan Wang (U Minnesota), Lan Lan (Duke), Runze Li (Penn State), Lan Wang (U Minnesota), Jun Yan (U Iowa) |
| | E. Analysis of Missing Data in Clinical Trials, Linda Yu (GSK), Robin Mogg (Merck), Craig Mallinckrodt (Lilly), Greg Soon (FDA) |
| | F. Adaptive Designs, Ivan Chan (Merck), Guanghan Frank Liu (Merck), Lu Cui (Sanofi-Aventis), Qing Liu (J&J), Sue Jane Wang (FDA) |
| 3:00 pm – 3:15 pm | Break |
| 3:15 pm – 4:45 pm | Concurrent Sessions (3) |
| | A. High Dimensional Problem: Statistical Challenges, Solution and Some Application, Samiran Ghosh (Purdue U), Mike West (Duke), Dipak Dey (U Conn), David Banks (Duke), Samiran Ghosh (Purdue U) |
| | B. Analysis of recurrent events and other related data, Zhenzhen Jin (Columbia), X. Joan Hu (Simon Fraser U), Sin-Ho Jung (Duke), Edsel A. Pena (U South Carolina) |
| | C. JP Hsu Memorial Session, Shuyen Ho (GSK), Karl Peace (Georgia Southern U), Burch Tsiatis (NC State), Shein-Chung Chow (Duke), Student Scholarship Winner |
| | D. Pharmaceutical Business Analysis, Yilian Yuan (IMS Health), Pavel Brusilovskiy (Merck), Yilian Yuan (IMS Health), Qing Liu (J&J) |
| | E. Panel session: experiences in early phase studies aimed to select appropriate dose regimens that led to success vs. failure |
| | Frank Shen (BMS), Sue Jane Wang (FDA), Fred Balch (BMS), Ivan Chan (Merck), Yin Yin (GSK), Naitee Ting (Pfizer) |
| | F. Bayesian Methods, Joe Ibrahim (UNC), Ming-Hui Chen (U Conn), Joe Ibrahim (UNC), TBD |
| 4:45 pm – 5:00 pm | Break |
| 5:00 pm – 9:30 pm | Optional Excursions (e.g. Duke Chapel & Gardens, followed by Chinese Dinner) |
| Tuesday, June 5, 2007 | |
| 7:30 am – 8:50 am | Breakfast |
| 7:30 am – 4:30 pm | Registration |
| 9:00 am – 5:00 pm | Exhibits |
| 8:50 am – 9:00 am | Housekeeping/Announcements |
| 9:00 am – 10:00 am | Keynote Address – Professor Lj Wei (Harvard, "Predicting Future Observations via Empirical Regression Models") Chair: DanYu Lin (UNC) |
| 10:00 am – 10:20 am | Break |
| 10:20 am – 11:50 pm | Concurrent Sessions (4) |
| | A. Partially Linear Models with Applications in Biosciences, Hua Liang (U Rochester), Jiancheng Jiang (UNC-Charlotte), Tao Huang (U Virginia), Li-Shan Huang (U Rochester), Yan Yu (U Cincinnati) |
| | Organizer, Chair, Speakers |

| | |
|--------------------|--|
| | <p>B. Multivariate Longitudinal Data Modeling, <i>Ken Cheng (Columbia)</i>, David Dunson (Duke), Haiqun Lin (Yale), Bin Cheng (Columbia)</p> <p>C. Inference and Modeling of Mixture Distributions, <i>Sibugang Huang (Lilly)</i>, Jiahua Chen (U Waterloo), Huixia Wang (NC State), Lang Li (Indiana U), Yan Yang (Arizona State)</p> <p>D. Quality assurance testing of biopharmaceutical products, <i>Jinglin Zhong (FDA)</i>, Jinglin Zhong (FDA), Meiyu Shen (FDA), Yi Tsong (FDA)</p> <p>E. Statistics in Translational Medicine, <i>Dennis Cosmatos (Wyeth)</i>, <i>Shieh-Chung Chow (Duke)</i>, Dennis Cosmatos (Wyeth), Shieh-Chung Chow (Duke), TBD</p> <p>F. Statistical Genetics, <i>Danyu Lin (UNC)</i>, Michael Epstein (Emory U), Guoqing Diao (UNC), Fred Wright (UNC)</p> |
| 11:50 pm – 1:30 pm | Lunch (on your own) |
| 1:30 pm – 3:00 pm | <p>Concurrent Sessions (5)</p> <p>A. Adjusting for post-randomization confounding factors in clinical trials, <i>Yongming Qu (Lilly)</i>, <i>Ji Zhang (Sanofi-Aventis)</i>, Miguel A. Hernán (Harvard), Yanping Wang (Lilly), OuHong Wang (Amgen)</p> <p>B. Recent Advances in Sufficient Dimension Reduction, <i>Lexin Li (NC State)</i>, Dennis Cook (U Minnesota), Bing Li (Penn State), Xiangrong Yin (U Georgia), Efstathia Bura (George Washington U)</p> <p>C. Statistical Issues for QTL Mapping Analysis, <i>Zhao-Bang Zeng (NC State)</i>, Nengjun Yi (U Alabama at Birmingham), Fei Zou (UNC), Zhao-Bang Zeng (NC State)</p> <p>D. Panel session: experience in late phase clinical trials that led to success vs. failure, <i>James Hung (FDA)</i>, <i>Sue Jane Wang (FDA)</i>, Lu Cui (Sanofi-Aventis), Shuyen Ho (GSK), Gary Koch (UNC), Qing Liu (I&J)</p> <p>E. Student Award Session, <i>Shieh-Chung Chow</i>, Winner1, Winner2, Winner3</p> <p>F. Survival Analyses, <i>Danyu Lin (UNC)</i>, David Oakes (U Rochester), Jianwen Cai (UNC), Jinfeng Xu (National U Singapore)</p> |
| 3:00 pm – 3:15 pm | Break |
| 3:15 pm – 4:45 pm | <p>Concurrent Sessions (6)</p> <p>A. Challenges and Statistical Solutions for Analysis of Large Dimensional Data from Array CGH, <i>Yi Li (Harvard)</i>, Rebecca Betensky (Harvard), Pei Wang (Fred Hutchinson Cancer Center), Subharup Guha (Harvard)</p> <p>B. New Developments in the Analysis of Data with Unique Censoring Structures, <i>Qiang Zhao (Texas State)</i>, <i>Jianguo Sun (U Missouri-Columbia)</i>, Richard Cook (U Waterloo), Do-Hwan Park (U Nevada-Reno), Liming Wang (Institute of Environmental Health Sciences), Mai Zhou (U Kentucky)</p> <p>C. Outcome-dependent sampling and nonparametric methods in Epidemiologic Studies, <i>Haibo Zhou(UNC)</i>, Nilanjin Chatterjee, (NIH), Michael Kosrock (UNC), Tony Sun (U. Missouri-Columbia), Haibo Zhou (UNC)</p> <p>D. Statistical Roles and Challenges in Drug Development, <i>Qiming Liao (GSK)</i>, <i>Ping Li (GSK)</i>, James Hung (FDA), Jim Wang (Novartis), Thomas Hastings (PPD)</p> <p>E. Regularization methods, <i>Cheolwoo Park (U Georgia)</i>, Jeongyoun Ahn (U Georgia), Woncheol Jang (U Georgia), Junyong Park (U Maryland), Cheolwoo Park (U Georgia)</p> <p>F. Haplotype analysis in genome-wise association studies, <i>Jung-Ying Tzeng (NC State)</i>, <i>Andrew Allen (Duke)</i>, Yun Li (U Michigan), Jung-Ying Tzeng (NC State), Emma Huang (UNC)</p> |
| 4:45 pm – 5:00 pm | Break |
| 5:00 pm – 6:00 pm | ICSA General Meeting & Awards Ceremony |
| 6:30 pm – 10:00 pm | <p>Banquet & Entertainment</p> <p>Invited Speaker: Dr. Jim Goodnight (SAS CEO)</p> <p>Chair: Shuyen Ho (GSK)/Yu Lou (GSK)</p> |

| | |
|-------------------------|---|
| Wednesday, June 6, 2007 | |
| 7:30 am – 8:45 am | Breakfast |
| 7:30 am – 10:00 am | Registration |
| 9:00 am – 11:00 am | Exhibits |
| 8:45 am – 10:15 am | <p>Concurrent Sessions (7)</p> <p>A. Statistical Methods in HIV/AIDS Studies, <i>Yanqing Sun (UNC-Charlotte)</i>, Hulin Wu (U Rochester), Hua Liang (U Rochester), Michael G. Hudgens (UNC), Yanqing Sun (UNC-Charlotte)</p> <p>B. Recent Developments in Causal Inference, <i>Qi Long (Emory U)</i>, <i>Brent Johnson (Emory U)</i>, Michael Elliott (U Michigan), Dylan Small (U Penn), Julia Lin (Cambridge Health Alliance), Abdus Wahed (U Pittsburgh)</p> <p>C. Pharmaceutical Safety, <i>Joanne Zhang (FDA)</i>, Joanne Zhang (FDA), Zili Li (Merck), Yu-te Wu (FDA)</p> <p>D. Statistical Issues in Mass Spectrometry Proteomic Studies, <i>Jaroslav Harezlak (Harvard)</i>, Timothy Randolph (Fred Hutchinson Cancer Center), Ann L. Oberg (Mayo Clinic), Olga Vittek (Purdue U), Jaroslav Harezlak (Harvard)</p> <p>E. Statistical Issues in Analysis of High Dimensional Data, <i>Wenqing He (U Western Ontario)</i>, Kevin K. Dobbin (NCI), Duncan Murdoch (U Western Ontario), Wei Pan (U Minnesota)</p> <p>F. Equivalence and Non-inferiority Tests, <i>Shuyen Ho (GSK)</i>, Hubert Chen (U Georgia), Jun Shao (U Wisconsin), Shun-Yi Chen (Tamkang U, Taiwan)</p> |
| 10:15 am – 10:30 am | Break |
| 10:30 am – 12:00 pm | <p>Concurrent Sessions (8)</p> <p>A. Recent Developments in Semiparametric Methods for Censored Survival Data, <i>Wenbin Lu (NC State)</i>, <i>Daowen Zhang (NC State)</i>, Mengling Liu (NYU), Wenbin Lu (NC State), Limin Peng (Emory U), Donglin Zeng (UNC)</p> <p>B. Statistical Issues in High Dimensional Omics Data and Biomarker Discovery, <i>Lai Zhu (GSK)</i>, Katja Remlinger (GSK), Hao Li (GSK), Doris Damian (Beyond Genomics Medicine Inc)</p> <p>C. Non-inferiority and Equivalence Testing, <i>Yi Tsong (FDA)</i>, Kallapa Koti (FDA), James Chen (FDA)</p> <p>D. Selection Bias in Randomized Clinical Trials, <i>Vance Berger (NCI)</i>, Kevin J. Anstrom (Duke), William C. Grant (James Madison U)</p> <p>E. Statistical issues for mismeasured/missing and correlated data in epidemiological studies, <i>Haibo Zhou (UNC)</i>, Amy Herring (UNC), Huiman Barnhart (Duke), Rui Song (UNC), Bajhat Qaqish (UNC)</p> <p>F. Statistical Analysis of Brain Imaging Data, <i>Haipeng Shen (UNC)</i>, Young Truong (UNC), Ping Bai (UNC) Haipeng Shen (UNC)</p> |

International Chinese Statistical Association

Profit and Loss

January 1, 2006 through Dec 31, 2006

| | |
|---|-----------------|
| Balance, Dec 2005 | 61513.92 |
| Income | |
| 2006 interest income from Certificates of Deposit | 1521.09 |
| Short course income from Applied Symposium | 4465.46 |
| Membership dues | 17040.00 |
| Total Income | 23026.52 |
| Expense | |
| Miscellaneous | |
| Board meeting dinner at JSM | 1448.17 |
| Applied Journal lunch meeting at JSM | 86.40 |
| Board meeting room rental at Applied Symposium | 90.00 |
| Board meeting refreshments at Applied Symposium | 344.52 |
| Plaques | 1117.04 |
| Total Miscellaneous | 3086.13 |
| Postage and Delivery | |
| January Bulletin | 1613.76 |
| July Bulletin | 1793.23 |
| Statistica Sinica (Vol 16-3) | 4110.00 |
| Statistica Sinica (Vol 16-4) | 2184.00 |
| Book/journal donations in 2005 | 150.00 |
| Total Postage and Delivery | 9850.99 |
| Printing and Reproduction | |
| January Bulletin | 3817.50 |
| July Bulletin | 3731.00 |
| Cover page design for July Bulletin | 268.80 |
| Total Printing and Reproduction | 7817.30 |
| Web page hosting | 107.40 |
| Professional Tax Services | 500.33 |
| Total Expense | 21362.15 |
| Net Ordinary Income | 1664.37 |
| Other Income/Expense | 0 |
| Net Other Income | 0 |
| Net Income | 1664.37 |

International Chinese Statistical Association

Balance Sheet

January 1, 2006 through Dec 31, 2006

| | |
|---------------------------------------|-----------------|
| ASSETS | |
| Checking/Savings | |
| Checking | 33178.29 |
| Savings-Money Market | 30000.00 |
| TOTAL ASSETS | 63178.29 |
| LIABILITIES & EQUITY | |
| Equity | |
| Opening Balance Jan 1, 2006 | 61513.92 |
| Net Income | 1664.37 |
| Total Equity | 63178.29 |
| TOTAL LIABILITIES & EQUITY | 63178.29 |

Submission Guidelines for ICSA Bulletin

Articles

The International Chinese Statistical Association (ICSA) Bulletin welcomes the submission of articles by our members. Articles submitted should be written in English. The contents should be aimed at the general reading.

Articles should be submitted electronically in Microsoft Word documents. Files with Times New Roman font size of 12 points are preferred. Leave $\frac{3}{4}$ inches of blank space on each margin in regular or letter size pages (8.5 inches in width by 11 inches in height). If photo pictures are included in the articles, the corresponding JPEG files must be attached.

Submission deadlines are December 15 for the January issue, and June 15 for the July issue. Articles received after the deadline will be published in the following issue of Bulletin.

Reports or Announcements

The submission guidelines of reports or announcements are the same as the articles. Editable files in Microsoft Word are preferred. If needed, EXCEL may be used. If PDF files are sent, be sure that the margins or fonts are met as required in the Articles.

Advertisements

The ICSA Bulletin welcomes the submission of advertisements related to the profession of Statistics. The fee charge is \$225 for a half page, \$325 for a full page, \$350 for a color page (in front-inside, bottom-inside, or bottom-outside pages). If it is a color page, the corresponding PDF file for printing use must be sent. If you have questions or advertisement opportunities, please contact the Advertising Manager or Editor-in Chief.

Questions

Please submit your questions to the Editor-in-Chief by email: tckao@comcast.net